

# Office to let

## Tower Center International

Bucharest, Sector 1, 15-17 Ion Mihalache Blvd.



### Building information

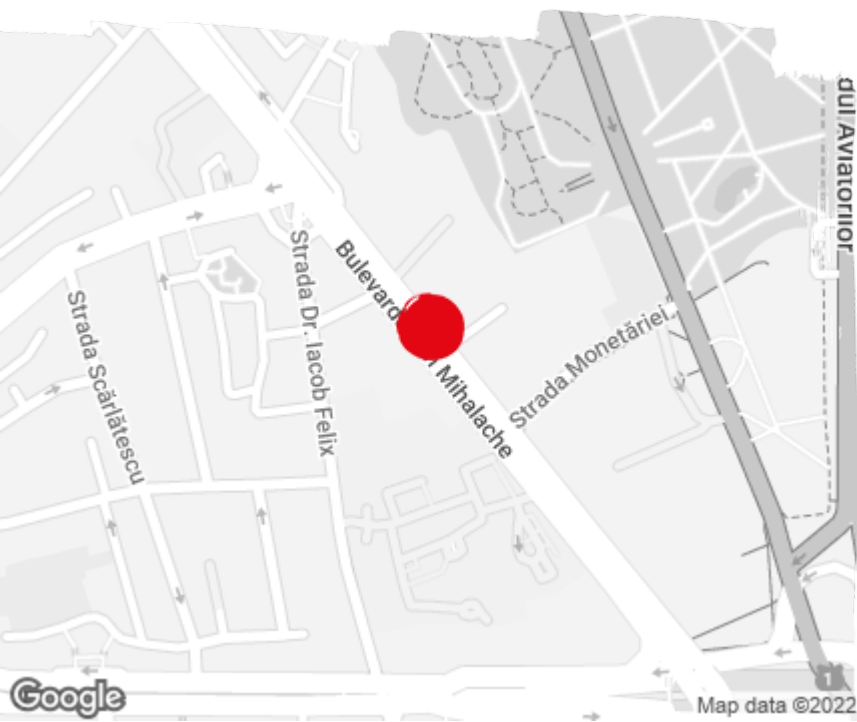
Building status	Existing
Year of reconstruction	2012
Parking ratio	1 / 163 sq m
Total building area	31 000 sq m

### Commercial terms

Office space*	after login *
Parking	after login *
Service charge*	after login *
Minimum lease term	after login *
Availability	after login *

\* Asking terms for m<sup>2</sup>/month

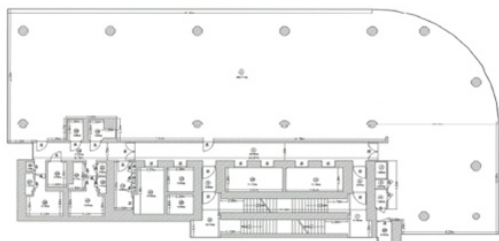
### Location



### Available space

Building completely leased

Typical floor plan



Public transport

Metro: M1, M2

Bus: 300, 205, 282

Tram: 24, 42, 45, 46,

Contact



+40 21 302 3400

More information